



# Laser marking station

FLEXIBILITY / SECURITY



MFR 98765  
PNR A65789  
SNR 123456

*LASERTOP 2000*



**Safe**



**Ergonomic**



**Adaptable**



**User's benefits**

- Fully enclosed
- Enhanced productivity
- Value-added marking
- User-friendly

A flexible and economic laser marking workstation

**TURN-KEY SOLUTION**

**Compact and Silent**

LaserTop 2000 can be installed on a desk or a work table. Quiet enough to be used in an office. No external cooling required.

**Spacious work area**

The useful area provides a **maximum flexibility** in size and weight of workpieces.

**Ready to mark**

It makes laser part marking accessible to all and can be operated with minimal training.

**Completely secure**

The **Class 1** enclosure, certified against Laser emissions, is fully interlocked to ensure **maximum safety**. It also includes a **door equipped with sensors** and an **anti pinch system**.

**User friendly**

Controlled by the intuitive **software T700W**, the LaserTop 2000 permits a **wide range of marking** results on a **wide range of materials**, including steels, alloys, carbide, precious metals, plastics, ceramics etc.

**FUNCTIONAL AND INDUSTRIAL**

**Optimum Comfort**

- **Counterbalanced door** : light, its linear opening on 3 sides allows effortless access to the working area.
- **Large viewing window**
- **LED lighting** embedded with the marking head : the marking area remains perfectly lit.

**Fast part alignment**

- Red pointer and **motorized height-adjustment** with position display
- **Industrial tooling plate**: fast, secure, precise fixturing of parts or tooling
- **Magnetic and wired remote control**: all functions at your fingertips

**Robust**

The robust casing and frame manufactured from high quality mechanical and electrical components ensures a long working life for the station.

**OPTIMIZED PRODUCTION**

**High performance**

Available with either **YAG** or **Fiber** technology, the LaserTop 2000 ensures very fast and precise marking.

**Multiple applications**

**Ideal solution** for small or medium batches : fast change-overs and easy part loading. Connected to a **barcode reader** or a **database**, the station becomes a **semi-automatic** production tool.

**Convenient**

**Motorized door** (option) with total or partial automatic opening provides enhanced productivity. The spacious working chamber allows the **integration of many standard and customized accessories**: cylinder attachment, rotary table etc.

«The mark of quality »





Technical characteristics

L	600
I	622
h	772

- Compatible with entire Technifor Laser range
- Accepts parts up to:

- 545 mm deep
- 558 mm width
- 365 mm\* high
- \* ref height table

Lens	Maximum part height
100	365
160	280
254	140
330	45

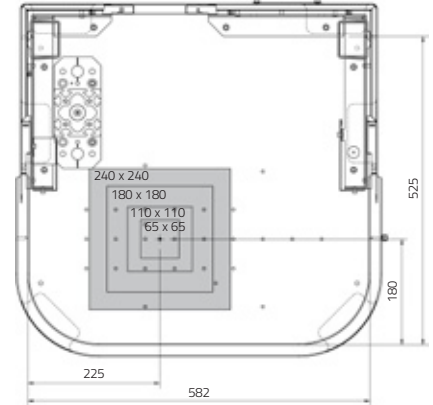
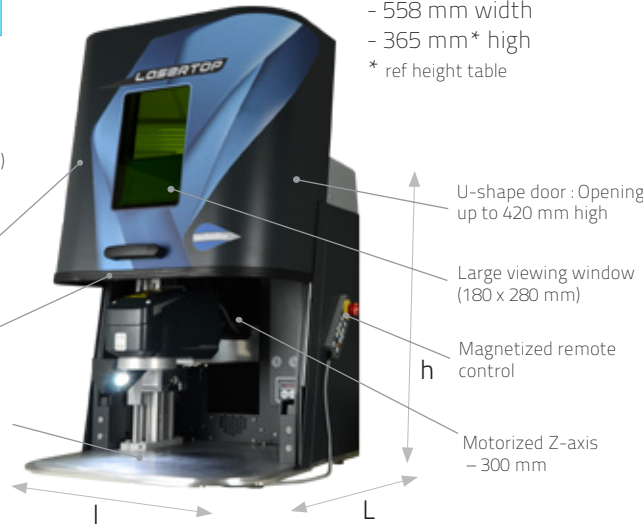
Dimensions in mm

60 kg (without laser)

Painted steel casing and frame

Light-tight

Large working volume with 27 M6 fixing holes on table



Software



T700W marking software

- **Traceability functions** : serial numbers, variables, UID syntax
- Bar codes (39, 128, UPC etc.), Data Matrix™, QR codes...
- Logos (PLT, JPG ...), industrial file management (DXF, BMP ...)
- Customizable operator mode

- Link to **databases** (ODBC, Excel, ASCII ...)
- Log file generation with **anti-duplicates control**
- **Material library** with presets
- Compatible with Windows® 2000, XP, Vista, 7



Environment & power supply

- Power supply 100/240 V, 50-60 Hz
- Operating temperature : +15°C to +35°C
- Humidity: < 80 %



Safety and protection

- The machine conforms to the following directives :
- Class 1 configuration (EN 60825-1 standard)
  - NF EN 61000-6-2 (EMC)
  - NF EN 61000-6-4 (EMC)
  - Directive 2002 / 95 / EC (RoHS)



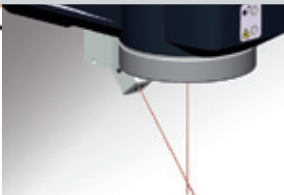
Accessories



Cylinder attachment



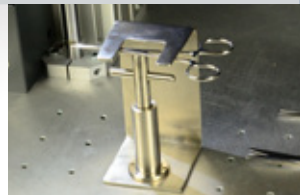
Bar codes, DataMatrix™, QR code reader



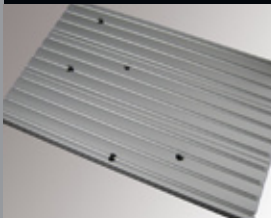
Second focus diode



Fume extractor



EZ FIX universal clamp



T-slot table

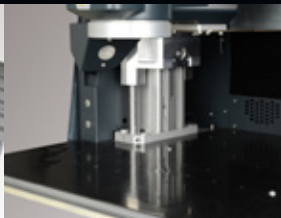


Table protection



Focal range and lens cleaning kit



Options

- Automatic door
- Programmable Z-axis
- Locked door

## Applications

Ergonomic and safe, the LaserTop 2000 is the ideal solution for many applications :



### + Small or medium batch marking

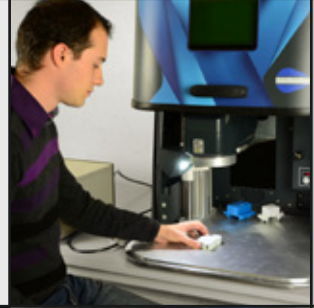
Safely identify batches and individual parts with logos, serial numbers, dates, 2D codes etc.:

Aerospace, nuclear, medical prosthesis, home wares, plumbing ...

### + Semi-automatic traceability

Scan a bar code, use an existing database, send data with PLC ...

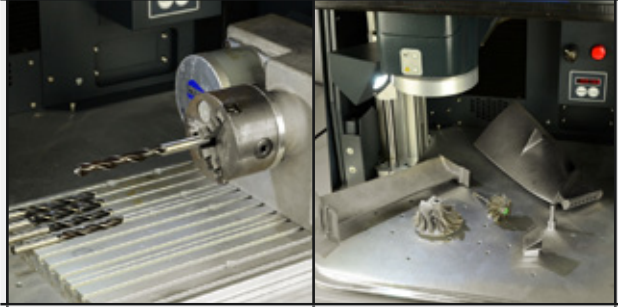
Identification plates, automotive parts, armament, medical implants ...



### + Matrix marking

Mark batches in one go :

Cutting tools, optical instruments, electrical connectors and caps, fasteners...



### + Versatile marking

Mark small or bulky parts of various materials and surface finishes :

Keys and locks, promotional items, safety materials, plastic handles, equipment...

Visit our website to see our complete range of micro percussion, scribing and laser solutions

Automotive  
Plastics

Aerospace

Keys and locks

Armament and military  
Medical

Mechanics

Electronics

Plumbing

Electrics

Cutlery industry  
Business gifts



Gravograph UK Ltd  
Unit 3, Trojan Business Centre | Tachbrook Park Estate  
Leamington Spa | CV34 6RH Warwickshire  
Tel: +44 (0)19 26 88 44 22 | Fax: +44 (0)19 26 88 31 05  
sales@ltd.technifor.com



[www.technifor.co.uk](http://www.technifor.co.uk)

Technifor is a registered trade mark of GravoTech Marking