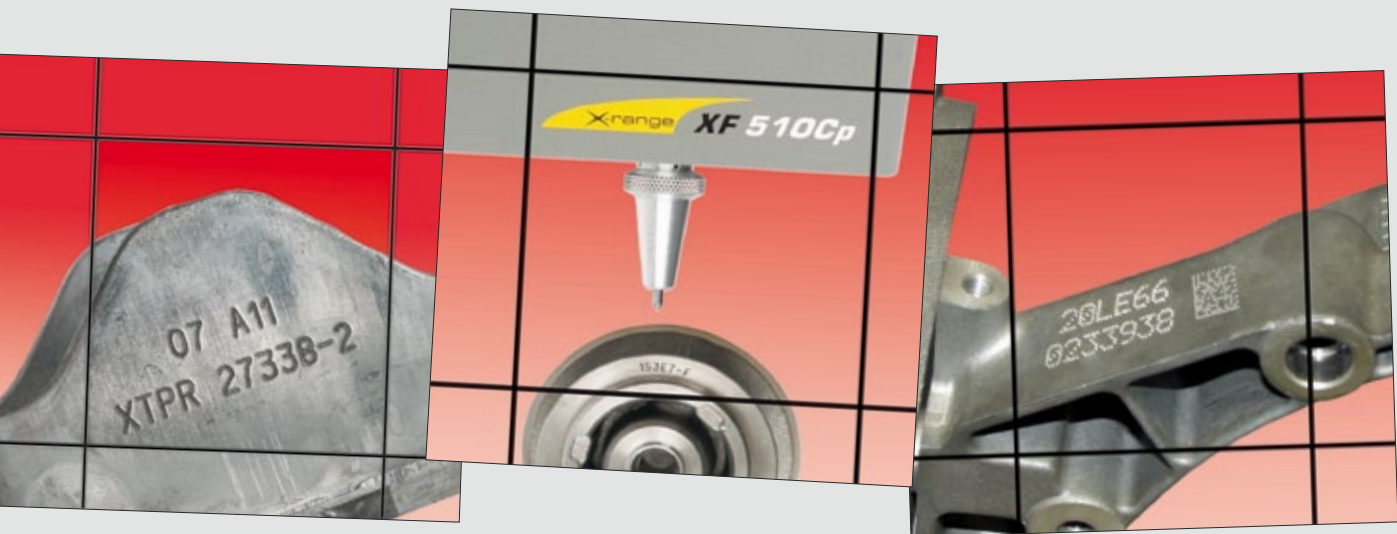




# Micro-percussion Marking Machines



## XF510p

XF510Cp  
XF510Sp  
XF510Dp

**Pneumatic**  
X-tra Fast, X-tra Small

10 characters within  
1 second!

# Industrial Traceability

## XF510p Marking Head

An extremely compact range of machines for unsurpassed speed and quality performance.

### A SOLUTION TO EACH APPLICATION

- A range of compact machines
- 3 marking areas available
- Easy to integrate for operation in any position

### INDUSTRIAL

- Simple to install and reliable
- Sturdy: adapted for intensive use in an ever-demanding industrial environment
- Proven: 25 years of reliability with Technifor's micro-percussion technology



### FAST AND EFFICIENT

- Two times faster than current machines: 10 characters in 1 second!
- Speed and marking quality for identification of any type of material
- The right solution for a fast-paced production environment



### COMPACT

- Ideal dimensions for integration on a production line, a rotary table or in an existing unit etc.
- Lightweight: with only 2.3kg (5lbs), the XF510Cp is ideal for assembly on a robotic or articulated arm



## UC500 Control Unit

A new generation of electronics with user-friendly and innovative functions.

### Product Highlights

- Permanent marking
- Reduced integration costs
- Increased productivity
- Easy and user-friendly
- International tech support

### INTUITIVE

- Wide and backlit screen
- Piloting software with icons and pop-up help
- Graphic preview: easy text verification and adjustment
- Easy to program: fixed texts, variables, linear, angular, radial, Data Matrix™ marking, link to databases etc.

### INNOVATIVE

- Backward & forward marking: for time-saving cycles..
- USB key connection
- Single power supply: for use in any country

### INTERACTIVE

- Standard equipment : RS232, USB, Ethernet connections and 8 Input/4 Output card
- Data to mark with keyboard reception, bar code reader or other software systems
- Communication interface: start marking, cycle complete, cycle stop, machine ready, marking in progress...



Integration on production line

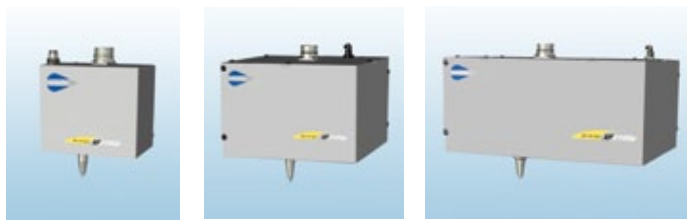


Use in a marking station

- + 5.7" wide screen with graphic preview
- + Memory capacity for over 1000 marking files!
- + USB drive for quick logo and file downloads
- + Multilingual and multi-keyboard

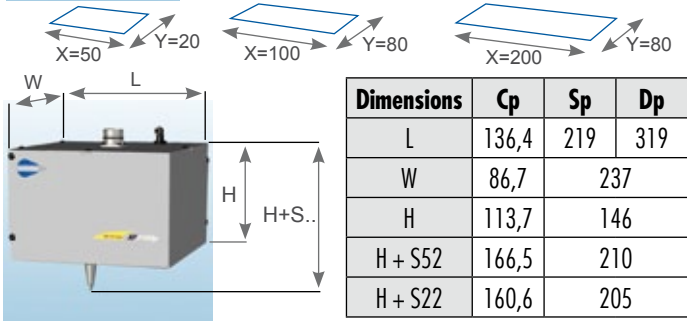


# Technical characteristics



## XF510Cp / Sp / Dp Marking Head

	Cp	Sp	Dp
Marking area mm: inches:	50 x 20 1.97x0.79	100 x 80 3.94x3.15	200 x 80 7.87x3.15
Character height mm: inches:	from 0,5 to 49,5 from 0.02 to 1.95	from 0,5 to 99 from 0.02 to 3.90	from 0,5 to 99 from 0.02 to 3.90
Weight Kg (Lbs)	2,350 (5.18)	7,800 (17.20)	9,700 (21.38)



## UC500 Control Unit

- 5.7" backlit screen
- RS232 - USB - Ethernet - on-board 81/40
- External keyboard provided
- T05 integrated marking program (graphic preview)
- Weight: 3.9 Kg (7.8 Lbs)

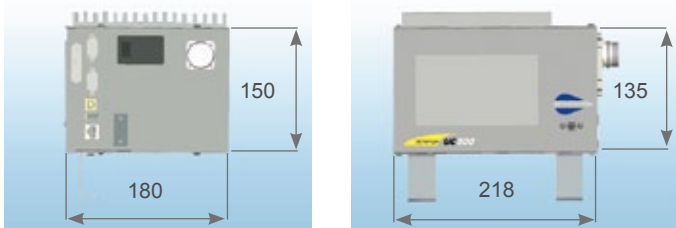
## Environment and power supply

- Power supply: 90 – 230 VAC
- Power: 150 VA
- Air pressure: 6 bars  $\pm 0,5$  (87psi) (non-lubricated dry air)
- Operating temperatures: +5 à +45°C

## Safety and protection

In accordance with the following directives :

- "Machines" 98 / 37 / CE
- "Electromagnetic Compatibility" 2004 / 108 / CE
- "Electric Devices" 2006 / 95 / CE
- "DEEE" 2002 / 96 / CE



Dimensions in mm

TIF, 2D, 3D drawings, integration guides ... available on request



Marking File



Graphic preview

# Options and accessories



90° elbow connector



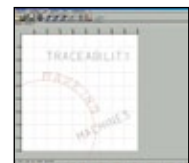
Protective shutters



Height setting system  
( $\pm 22$ mm)



Stylus range



Windows® T500W  
Marking Software



Head-UC500 cable  
(3m, 6m, 10m, 15m)  
standard and robotic



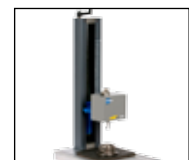
Protective boot



Circular marking device:  
DMC15, DMC25



UC500 Rack option  
(5U 19")



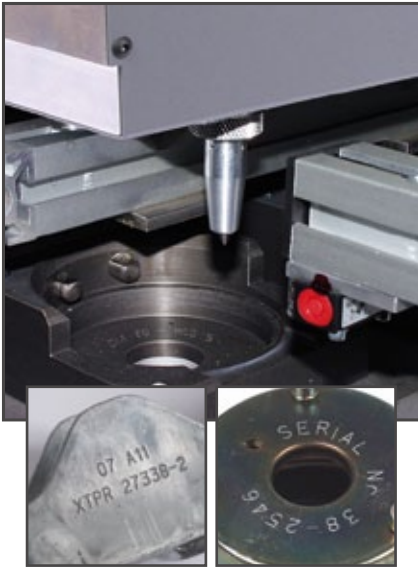
Column frame

# APPLICATIONS

The XF510p machines are used for marking any part shape of all material types.

**X**tra Fast

## Unsurpassed speed for a fast-paced production



**Permanent marking:**  
Serial numbers, dates etc.



**Traceability of any type of part:**  
DataMatrix™ codes, QR Codes



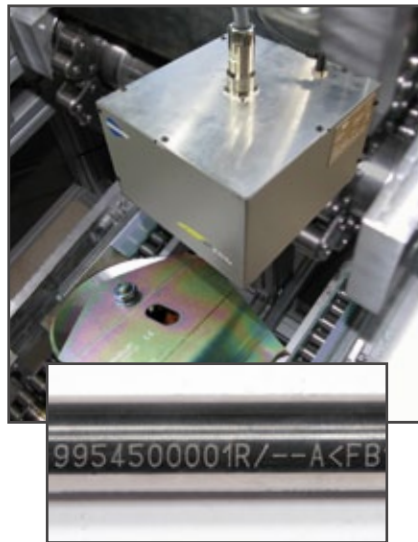
**Product identification:**  
references and logos

**X**tra Small

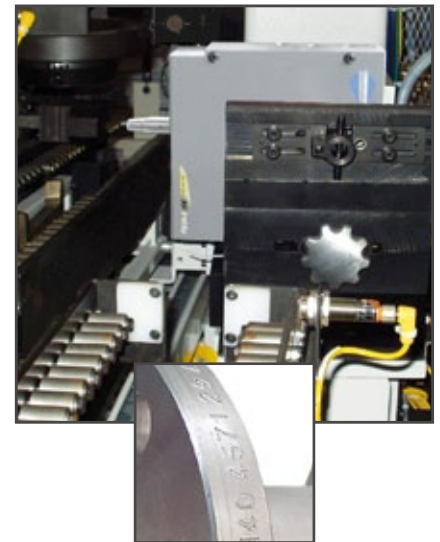
## Ideal dimensions for integration



**Marking at the exit-end  
of machining center**  
(mechanic parts, keys, alu casings...)



**Part coupling  
on assembly station**



**Integration on  
production line**  
(Automotive, Metallurgy, Mechanics...)

**Please visit our website to see our full range of:  
Laser, Micro-percussion and Scribing Solutions.**



A MARK WHICH DEFIES TIME

**Technifor UK**  
Unit 3 Trojan Business Centre - Tachbrook Park Drive  
LEAMINGTON SPA - Warwickshire CV34 6RH  
Tel. : (44) 01926 88 44 22 - Fax : (44) 01926 88 31 05  
sales@ltd.technifor.com  
[www.technifor.co.uk](http://www.technifor.co.uk)

Technifor is a registered trade mark of GravoTech Marking

