

PORTABLE MARKING SOLUTION

X-range

XF520Cp

For part marking and identification, the XF520Cp portable machine offers both **speed** and **reliability** in a practical and compact size.



Suspension ring provided



USB drive



Ergonomic handle with trigger action



HIGH-PERFORMANCE

Uses the same technology as our integrated marking machines, running 24 hours/day on automated production lines: serial numbers, logos, DataMatrix™ codes etc.

Speed, reliability and excellent marking quality: up to 10 characters per second!

HAND-ADAPTED AND EFFICIENT

Lightweight, its **compact size** can mark locations that previous systems can't reach.

Marking is **accurate** and **efficient** in whichever position used.

Perfectly balanced and easy to handle (intuitive grip), this machine offers **optimal stability**, without uncomfortable vibration.

VERSATILE

Marks a wide range of materials: metals, alloys, plastics..., on **any type of surface**: raw, machined, painted..., of **any shape**: flat, curved... thanks to an integrated V-shaped universal feet system.

NEW GENERATION ELECTRONICS

Fast creation of the marking files thanks to an integrated **intuitive** and **user-friendly** software: icons, pop-up help, **graphic preview** on a wide screen...

Ease of importing-exporting files and logos via a **USB drive**.

Data reception to mark via a keyboard, bar code reader or other computer systems.



Heavy and large parts



Hard-to-reach areas



Flat, convex or concave surfaces

Product Highlights

- Increased productivity
- Proven industrial reliability
- Maximum comfort of use
- Reduced training time
- New communication tools
- Tech support in every country



Permanent traceability on all types of metals or plastics.



Traceability in maintenance room

Post-manufacturing marking
or at the end of a production line



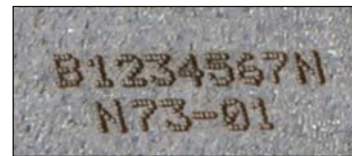
Marking of part lots
before shipping



Storage area identification
and classification



Identification
and recording of fixed assets



TECHNICAL SPECIFICATIONS

Characteristics:

- Net weight: XF520Cp: 2.7 kg (5.3 lbs) - UC520: 3.9 kg (8.6 lbs)
- Dimensions (w/o handle) LxWxH: 133x179x94 mm (5.2"x7.1"x3.7")
- Marking area: 50x20 mm (2" x 3/4")
- External keyboard: 105 keys PS2 (supplied)
- UC520 screen: 240x128 pixels with **graphic preview**
- Memory capacity of over **1000 marking files**
- Character size: from 0.5 to 49.5 mm (1/100" to 2")
- Fixed text, variables, date and time codes, counters etc.
- Flat, angular, radial marking etc.
- **Multilingual and compatible with any keyboard setting**

Accessories:

- Extended cords: up to 12 m
- Custom positioning feet
- Bar code and Data Matrix™ readers

Environment and power supply:

- Power supply: 90 – 230 V AC
- Air pressure: 6 bars ± 0,5 (87 psi) - non-lubricated dry air
- Power: 150 VA
- Functioning temperature: +5 to +45 °C (41 °F to 113 °F)

Standards complied to:

- Machine directive 98/37/CE.
- Electromagnetic compatibility directive 89/336/CEE.
- Low voltage directive 73/23/CEE.



A MARK WHICH DEFIES TIME

GravoTech Marking SAS
114, quai du Rhône - F-01708 MIRIBEL Cedex
Tel +33 (0)4 78 55 85 85
Fax +33 (0)4 78 55 22 94
E-mail : tf.dvfrance@technifor.com
www.technifor.com

Technifor is a registered trade mark of GravoTech Marking SAS

