

**Concentrated power
for deep marking.**



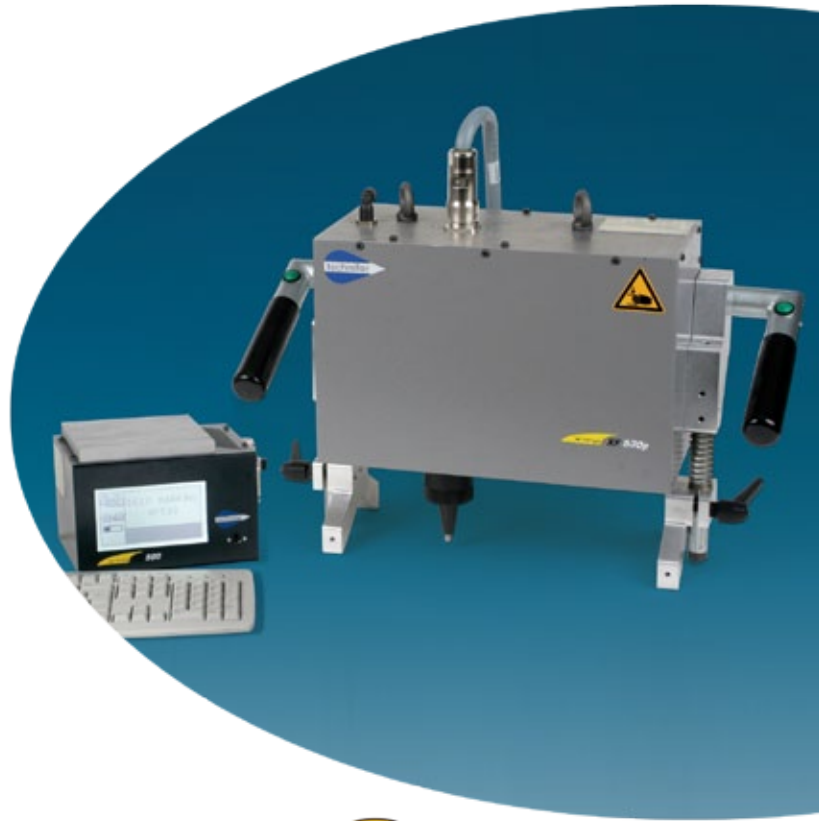
Ergonomic handles with built-in trigger



USB drive



Adjustable V-shaped universal feet



POWERFUL

Deep marking: up to 0.4mm.
Large character marking.
Ideally suited to mark before / after painting, before part treatment...

VERSATILE

Large marking area (200x50mm).
Adjustable V-shaped universal feet: marking on flat surfaces, profiles, tubes...
Orientable handles: easy to use in horizontal and vertical positions.

EASY AND EFFICIENT

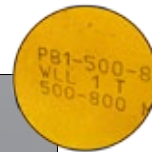
Ergonomic handles with built-in start buttons.
Fast creation of marking files thanks to an integrated, intuitive and user-friendly software.
Ease of importing-exporting files and logos via USB drive.
Large backlit screen with graphic preview of the marking result.

INDUSTRIAL

Precise, tough and reliable system.
Keyboard, RS232, Ethernet and 81/40 connexions for link with computer and/or traceability systems.



Flat surface marking



All material types and surfaces



Tube marking



Product Highlights

- Deep marking
- Marks can not be falsified
- Easy to use
- Reduced costs



Indoor and outdoor use.



Lifting and material handling systems, forklifts...

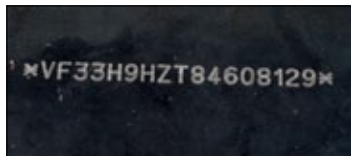
Oil & Gas, Mining industry...

Truck frames (V.I.N.), construction vehicles...



Shipbuilding

Metallic structures, building construction



TECHNICAL SPECIFICATIONS

Characteristics:

- Net weight: XF530p: 18 kg (39.7 lbs) - UC500: 3.9 kg (8.6 lbs)
- Dimensions (w/o handle) LxWxH: 343x170x221 mm (13.5"x 6.7" x 8.7")
- Marking area: 200x50 mm (7.87" x 2")
- 5.7" backlit screen with graphic preview
- Flat, angular, radial marking etc...
- Fixed text, variables, date and time codes, counters etc...
- Memory capacity of over 1000 marking files
- Multilingual and compatible with any keyboard setting
- External keyboard (supplied)



Accessories:

- Connecting cords: 3, 6, 10 or 15 m
- Balancer
- Custom positioning feet
- Bar code and Data Matrix™ readers

Environment and power supply:

- Power supply: 90 – 230 V AC
- Air pressure: 6 bars ± 0,5 (87 psi) - non-lubricated dry air
- Air consumption: 600L/minute
- Power: 150 VA
- Functioning temperature: +5 to +45 °C (41 °F to 113 °F)

Standards complied to:

- Machine directive 98/37/CE
- Electromagnetic compatibility directive 89/336/CEE
- Low voltage directive 73/23/CEE

Technifor UK

Unit 3 Trojan Business Centre - Tachbrook Park Drive
LEAMINGTON SPA - Warwickshire CV34 6RH
Tel. : (44) 01926 88 44 22 - Fax : (44) 01926 88 31 05
sales@ltd.technifor.com - www.technifor.co.uk



A MARK WHICH DEFIES TIME

Technifor is a registered trade mark of GravoTech Marking SAS

