

Scribing Marking Machines



CN312r

CN312 Cr
CN312 Sr

Quality marking
without the noise



A MARK WHICH DEFIES TIME

Applications

INTEGRABLE MARKING MACHINES

CN312Cr Compact : 50 x 40mm marking window,
CN312Sr Standard : 100 x 120mm marking window.

USAGE:

Ideal solution for the marking of metal and plastic parts, of various shapes and surface conditions (automobile, mechanical, cast, electromechanical, ...).

ENVIRONMENT:

Conceived for industrial integrations:

- on production lines,
- in automatic or semi-automatic assembly or test stations.

INTEGRATED SOFTWARE FEATURES:

- Create / Modify / Save marking data:
 - Management of 6 Input / 2 Output board.
 - Calculation of variable data: date codes (several formats available), shift codes, serial numbers.
- Management of text style:
 - choice of fonts (standard, OCR, ...),
 - character height adjustable in steps of 0.1mm,
 - choice of logos,
 - compression, spacing, automatic centering,
 - linear marking, angular, radial, inclination, inverted, mirrored.
- Downloading of custom fonts and logos.

HIGH PERFORMANCE

Specially conceived to meet high marking quality standards while working in severe, intense production environments:

- Assures a permanent mark, directly onto the hardest material (62 HRC) without consumables or percussion, and at low noise levels (less than 72dB(A)).
- Up to 6 characters per second.

SAVE TIME AND MONEY ON INTEGRATION

The independent user-friendly UC112 control unit (screen + internal software + keyboard) speeds programming and eliminates the need for a PC or PLC.

SIMPLIFIED INDUSTRIAL INTEGRATION

Control the marking head by:

- File selection from memory of the UC112 by activation of inputs.
- Control unit in independent mode.
- PLC or other information system, via RS232 link.

Easy to mount:

- Simple attachment: 2 M8 or 4 M6 mounting holes.
- 2 Ø8H8 positioning holes.

PREVENTIVE MAINTENANCE TOOL:

Stylus usage counter: information can be sent to an output or to the LCD screen.

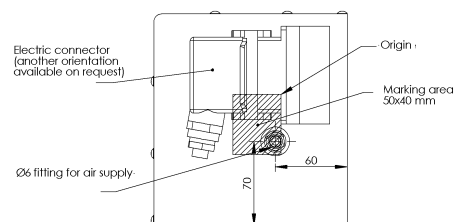
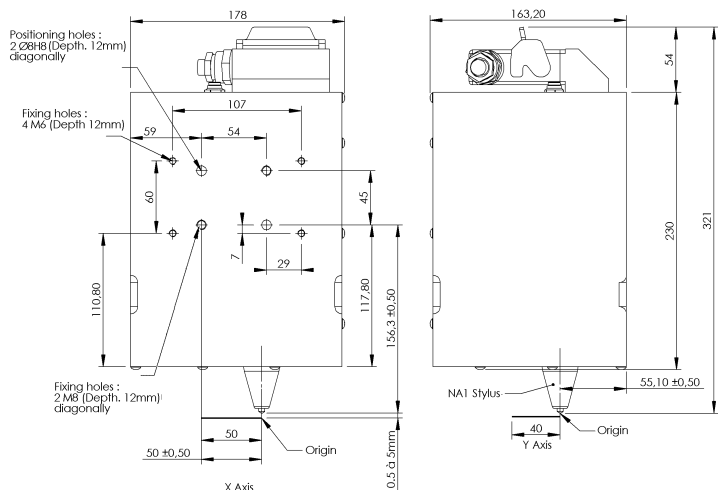
NORMS:

- Directive "Machine" 89/392/CEE.
- Directive "Electromagnetic compatibility" 89/336/CEE.
- Directive low voltage "Electric devices" 73/23/CEE.
- Complies with part 15 of the FCC rules.

Permanent Marking



CN312Cr



CN312CR		
Unit: mm	02/04/03	lad
	TEC00040	E

Technical characteristics

COMMON CHARACTERISTICS OF CN312Cr/Sr MACHINES

Scribing stylus:

- Long stylus (56mm) for light marking, Short stylus (38mm) for deep marking.
- Depending on the surface finish, 2 types of points are available:
 - Carbide point for rough surfaces ($3.2 < Ra < 12.5$)
 - Diamond point for smooth surfaces ($Ra < 3.2$).

Accessories/Adaptations:

- 3m Head/UC cord (standard), 6m, 10m or 15m.
- Mobile protection shutters or protective boot.
- Height adjustment system (± 22 mm).
- Column.
- Manual part loading device.
- Start cycle/End cycle button box.
- 115 or 230V AC / 24V DC – 110W power supply.

Environment:

- Air supply: operating pressure from 1 to 4bars, (14.5 - 58PSI), with $\varnothing 6$ mm pneumatic fitting.
- Consumption: 0.4 to 0.7 NI / character, Max: 3 SCFM.
- Operating temperature: +5 to +45 °C.

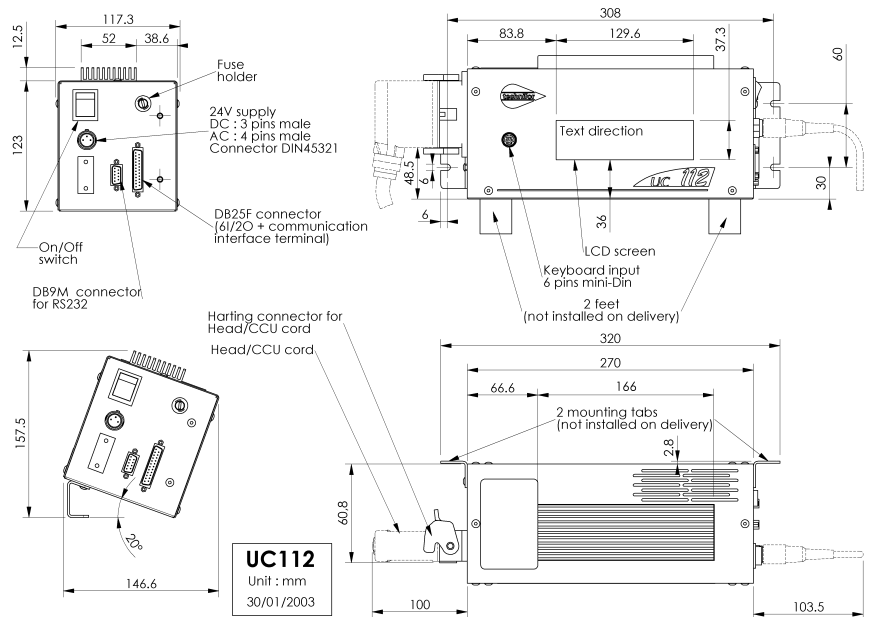
Options:

- Downloading of fonts and logos (HPGL).
- T101W Windows® marking software.
- File transfer software between the UC112 and a PC.
- External data input via RS232 link.
- 19" 4U rack mount face plate for UC112.
- Additional 8I/8O board.
- Start marking foot pedal.

Machines	CN312Cr	CN312Sr
Dimensions (without stylus and connector)	178x164x284mm (7x6.5x11.2")	264x309x184.5mm (10.4x12.2x7.3")
Weight (marking head)	9.2Kg (20.3lbs)	10.5Kg (23.1lbs)

- Dimensions (lxhwx) without connectors: 270x117.3x135.5mm (10.6x4.6x5.3").
- Weight: 3.2Kg (7lbs).
- Electrical supply: 24 V DC $\pm 10\%$.
- Consumption: 110 W.
- Data input by:
 - 105 key AT external keyboard (supplied with UC112).
 - PC using T101W Windows® software.
 - PLC via RS232 link (DB9 connector).
 - Other information systems via RS232 link.
 - Bar code readers via RS232 link (optional).
- "User" mode (limited functions) and "Supervisor" mode (password protected access to all functions).
- Data import from CSV or Excel file (using T101W program).
- Export marked text via RS232 link:
 - to a PC: for creation of a historic file.
 - to a printer: for marking a label.
 - to a PLC: to verify text marked, for example.
- File selection from memory:
 - by 105 key AT keyboard.
 - by 6I/2O (on DB25 connector).
 - by RS232 connection.
- Communication interface (DB25 connector):
 - Start of marking.
 - End of cycle.
 - Reset.
 - Machine ready.
 - 6I/2O.

UC112



CN312Sr

