

## COMPLETELY INDEPENDENT OPERATION

The UC112 control unit integrates:

- The composition of the text to be marked (removable external keyboard).
- The control of the marking head for:
  - micro-percussion (indent marking),
  - scribing.

## EASY TO INTEGRATE

- The **internal software** permits **independent operation** of the UC112 (no need for an external PC or PLC to program the control unit).
- **3 mounting methods:**
  - **Rear mount** in electrical cabinet (2 mounting tabs, included).
  - **Rack mount** in electrical cabinet (19" 4U Rack, optional).
  - **Bench top** (2 feet, included).

## EASY TO PROGRAM

Various methods of inputting data:

- 105 key AT external keyboard (included with UC112).
- PC using T101W Windows® software.
- PLC via RS232 link (DB9 connector).
- Other information systems via RS232 link.
- Bar code reader via RS232 link (option).

## SECURITY

- Operator / Administrator Mode.
- Removable keyboard for operation in independent mode.
- Back-up/transfer of marking files between UC and PC.

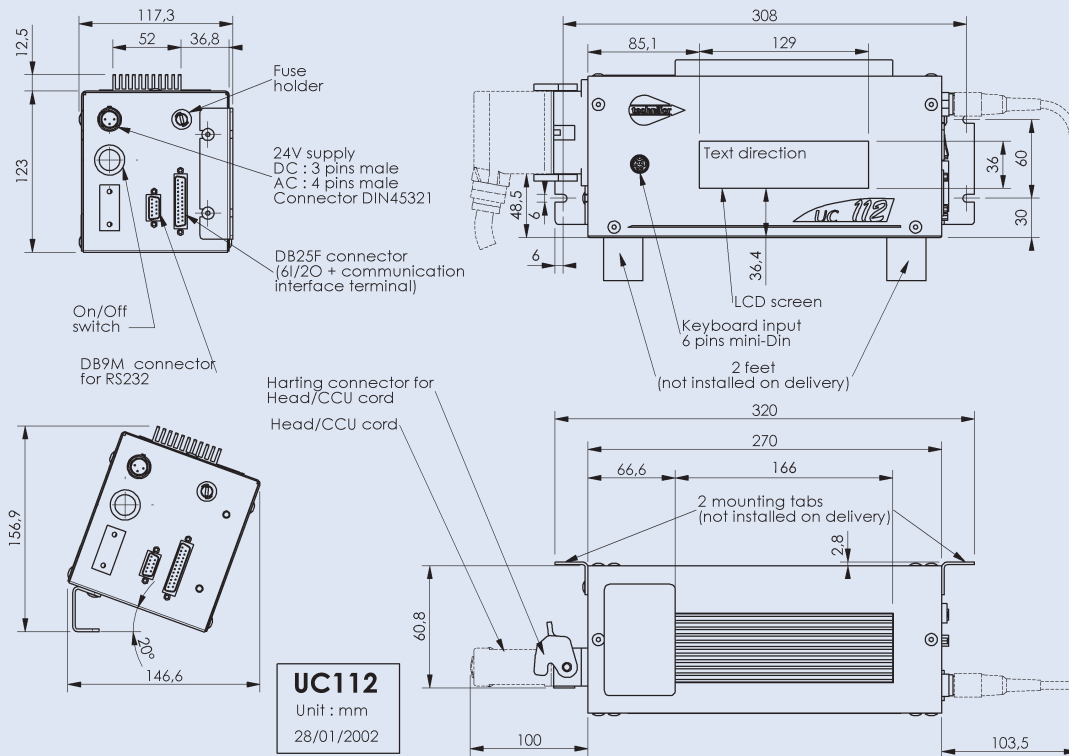


## INTEGRATED SOFTWARE FEATURES

- Create / Modify / Save marking data.
- Management of 6 Input / 2 Output board.
- Calculation of variable data : date codes (several formats available), shift codes, serial numbers.
- Management text style:
  - choice of fonts (standard, OCR, 5x7, ...),
  - choice of logos,
  - compression, spacing, automatic centering,
  - linear marking, angular, radial, inclination, inverted, mirrored.
- Downloading of custom fonts and logos.



# TECHNICAL SPECIFICATIONS



The 24 V AC power supply is specific for electro-magnetic marking heads.

## Environment:

- Dimensions (l x h x w) without connectors:  
270 x 117.3 x 135.5 mm
- Weight: 3.2 Kg
- Electrical supply: 24 VDC or 24 VAC  $\pm 10\%$   
(DIN 45 321 connector - 3 pins for DC, 4 pins for AC)
- Consumption: 110 W (with 24 VDC supply)  
200 VA (with 24 VAC supply)
- Operating temperature: +5 to +40 °C (+41 to +104 °F).

## Accessories/Adaptations:

- 230 V AC / 24 V DC – 110 W power supply
- 230 V AC / 24 V AC – 200 VA power supply
- 115 V AC / 24 V DC – 110 W power supply
- 115 V AC / 24 V AC – 200 VA power supply

## Options:

- 19" 4U Rack mount face plate.
- DataMatrix® 2D Code.
- Downloading of fonts and logos (HPGL).
- T101W Windows® marking software.
- UC112 to PC file transfer software.
- External data input (via RS232 link).

## Control Unit

- Processor : 32 bits
- Memory capacity : 51 Kb
- LCD Screen, 129 x 36 mm (6 lines of 40 characters),
- Fonts: continuous line, OCR, 5x7
- Communication interface (DB25 connector):
  - Start of marking.
  - End of cycle.
  - Reset.
  - Machine ready.
  - 6I / 2O.
- Data input by:
  - 105 key AT external keyboard (included with UC112).
  - PC using T101W Windows® software.
  - PLC via RS232 link (DB9 connector).
  - Other information systems via RS232 link.
  - Bar code readers via RS232 link (optional).
- File Selection from memory:
  - by 105 Key AT keyboard.
  - by 6I / 2O (on DB25 connector).
  - by RS232 connection

## Norms:

- Directive "Machine" 89/392/CEE.
- Directive "Electromagnetic compatibility" 89/336/CEE.
- Directive low voltage "Electric devices" 73/23/CEE.
- Complies with Part 15 of the FCC rules.



114, quai du Rhône - F-01708 MIRIBEL Cedex  
Tel +33 (0)4 78 55 85 50 - Fax +33 (0)4 78 55 85 60  
E-mail : tf@technifor.com

[www.technifor.com](http://www.technifor.com)

Technifor SA - Miribel site - F