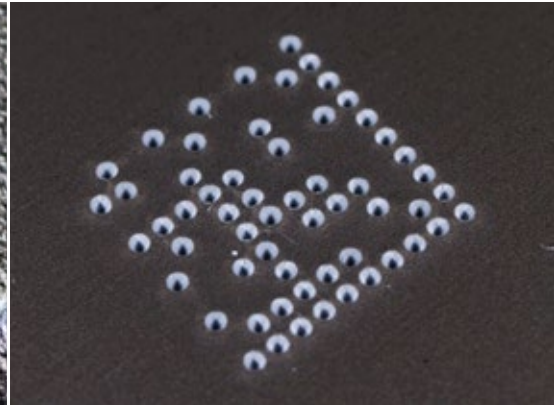




MARKING STATIONS
DOT PEEN SOLUTION



BENCHTOP RANGE

IMPACT

DOT PEEN MARKING STATION



TOUCH & MARK

Start marking the moment your machine is out of the box!

The IMPACT is a **totally standalone machine** with onboard traceability software.

Its intuitive touch interface makes it easy to configure and master. So it facilitates the development of a unique identification system for your workpieces and reduces the risk of error.

The IMPACT capitalises on long experience in the field of industrial traceability.



I-SENSE

With the motorised Z axis, it has never been so easy to adjust the Z axis. The I-Sense function detects the surface of the workpiece, **automatically adjusts the height** of the Z axis and starts marking with no intervention on the part of the operator.

Several adjustment modes are available: automatic mode (I-Sense), programmable mode and normal mode, which allows manual adjustment by means of buttons located on the side of the machine.



DYNAMIC DOT CONTROL

A perfect result every time!

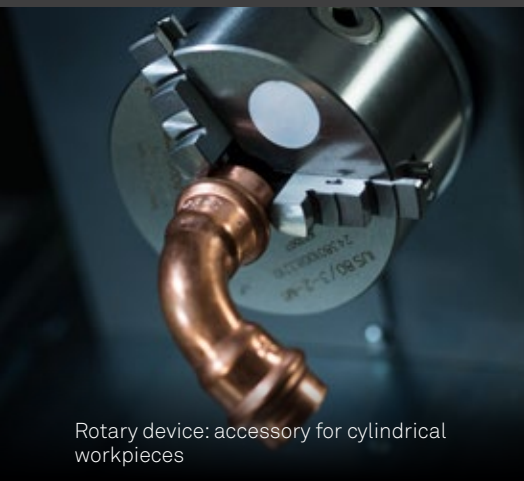
The IMPACT features DDC™ (Dynamic Dot Control) technology.

This enables **automatic adjustment of point density** according to the required size and depth of marking. Your markings are visible and of high quality, irrespective of your application. Two adjustment modes available: automatic and manual.

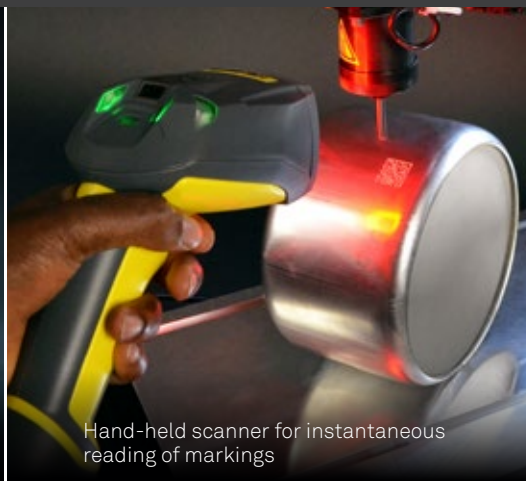
TECHNICAL CHARACTERISTICS

IMPACT

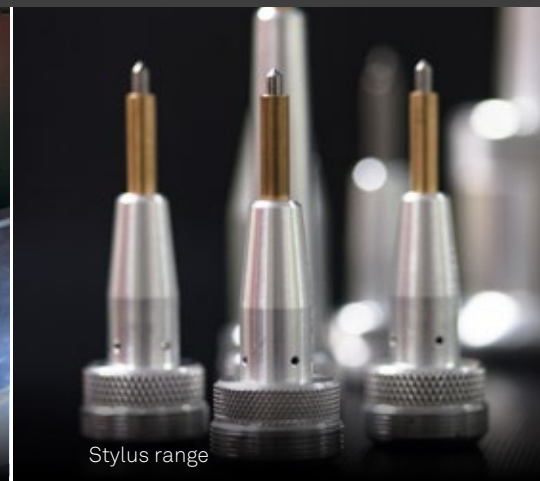
Marking field	100 x 120 mm
Technology	Pneumatic or Electromagnetic
Z axis	Motorised or Manual (basic version)
Z travel	300 mm
Character height	0.5 - 100 mm
Marking applications	Texts, logos, 2D codes (DataMatrix, QR codes etc.)
Communication	Ethernet TCP/IP, RS232, USB, FTP, dedicated Inputs/Outputs
Power supply	Universal: 100-240 V AC
Material hardness	≤ 62 HRC (marks most metals)
Weight & dimensions (L x w x h)	26 kg - 430.9 x 270 x 704 mm
Software	T08 - onboard software
Software functionalities	<ul style="list-style-type: none"> Serialisation - Automatic timestamping - Counters - Duplication control - Marking result preview - Link to a database (CSV, Excel, Access) - Marking history



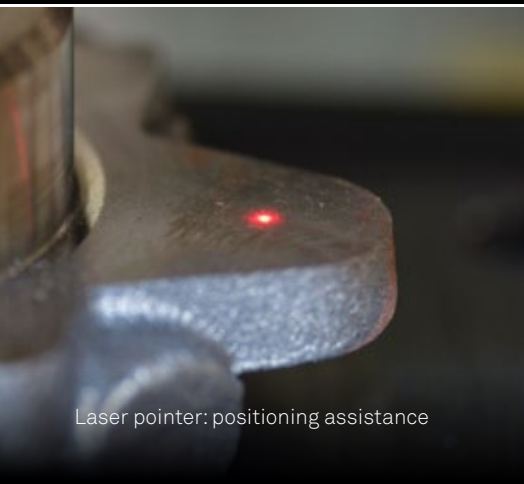
Rotary device: accessory for cylindrical workpieces



Hand-held scanner for instantaneous reading of markings



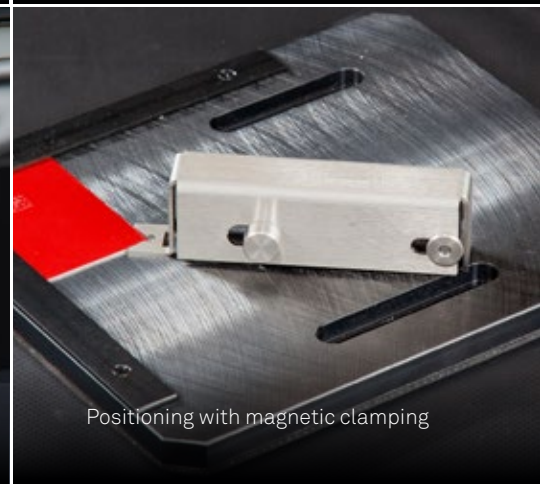
Stylus range



Laser pointer: positioning assistance



Protective bellow



Positioning with magnetic clamping

FOR ALL MARKING

The IMPACT marking station meets all your identification needs, present and future:

- **Direct and permanent marking** : references, logos, serial numbers, dates, graphics and symbols, counters, graduations, DataMatrix codes etc.
- **Marking of plates in series** : automatic plate feeders (as an option).
- **Unique identifier and traceability** of every component and batch of workpieces.
- **Markings compliant with ISO**, automotive, aeronautical, military and defence standards etc.

“

The user is at the centre of our solutions: maximum simplicity and efficiency have been the watchwords in the design of this solution. Identification and traceability have never been so easy.

”

Gérard Guyard - President



CONTACT US

TEL : +44 (0) 1926 884422

E-mail : sales@ltd.technifor.com

www.technifor.co.uk



TECHNIFOR UK

Unit 3 Trojan Business Centre
Tachbrook Park Drive
Leamington Spa
Warwickshire CV34 6RH



GRAVOTECH

